







Universal Engineering Limited in Gisborne is providing all types of engineering throughout New Zealand from its New Zealand base in Gisborne. Through its three departments: Sheet Metal; Precision Machine Shop; and Heavy Engineering, Universal Engineering is completing major projects for small and large-scale businesses with a focus on having the best employees and expertise and the best equipment and facilities.

## History

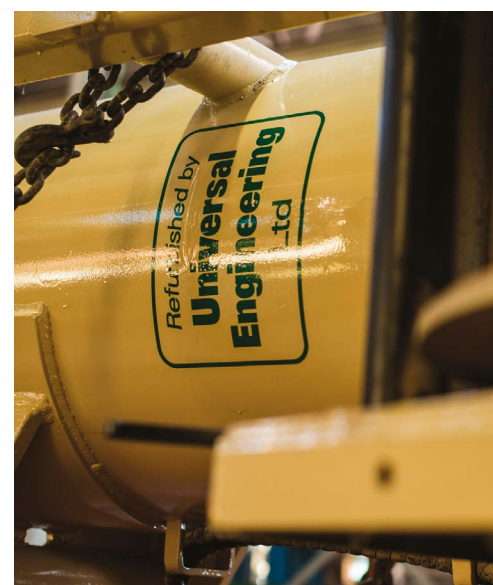
Universal Engineering Limited began life in 2001 after its new owners took over 50-year-old engineering company Monk Bros. The company has grown in size and scale and purchased significant new equipment to become a respected and regular supplier of engineering solutions across New Zealand. Facilities include a covered factory area of nearly one acre, nine overhead gantries, and three acres of yard space.





## Services

A strong feature of Universal Engineering Limited is its design focus with one of the two owners being a qualified engineer with three decades experience in the fabrication industry. We can design, develop and produce to your specific requirements.



### Sheet Metal Department

- Wine industry equipment and parts
- Food processing equipment
- Design and build mechanical equipment
- Building ventilation
- Industry ducting
- Industry and residential benches and stainless steel prep areas
- Custom jobbing work

### Heavy Engineering

- Forestry machinery rebuilds
- Hauler and yarder repairs and rebuilds
- Jobbing works
- Heavy equipment repairs
- Design and build mechanical equipment
- Log handling systems
- Saw mill equipment
- Food processing machinery
- Log haul trailers
- Structural steel
- Walkways and access platforms
- Industry fencing

### Precision Machine Shop

- Heavy forestry equipment
- Earth moving equipment
- Jobbing work
- Civil works machinery pins and bushes
- Timber processing industry equipment
- Food processing industry equipment
- Pump rebuilds
- Design and build hydraulic cylinders

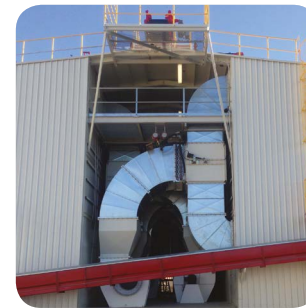






## Recent Projects

In the past five years the company has honed in on six areas of expertise: structural steel; stainless steel/sheet; precision machining; mechanical design and build; pipe work; and heavy vehicle repair, ensuring high quality control and customer satisfaction. Recent projects from each department include:



### Sheet metal

- 500 metres of stainless steel walkways for a Blenheim winery
- Industry ducting for a maize processing company
- Aluminium trailer repairs for the transport industry
- Specialized stainless steel equipment including conveyors, vacuum sealing and core sampling machinery for a local food processor



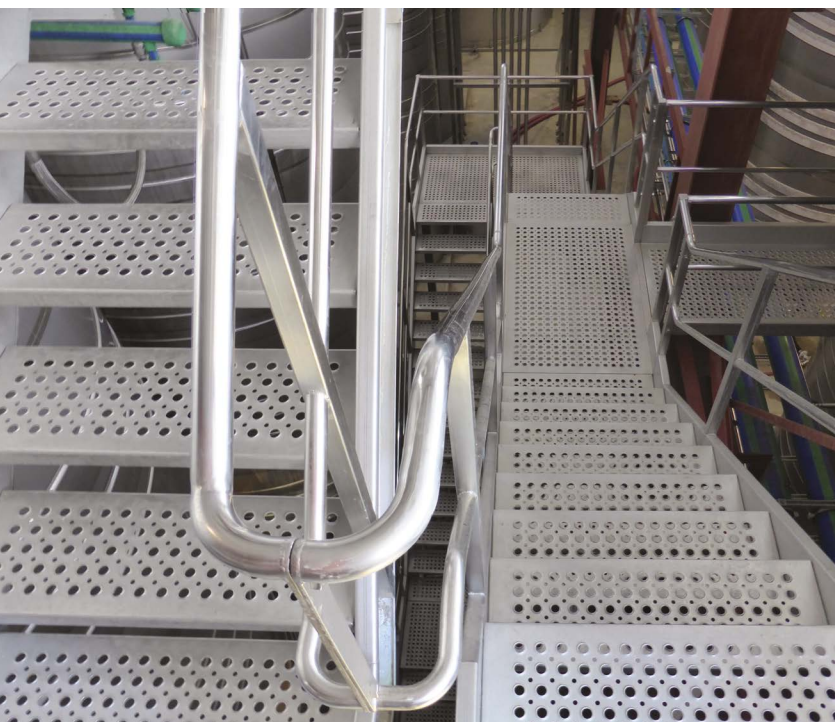
### Precision Machine Shop

- Re-boring grapples for local logging contractors
- Specialized equipment including shafts, sprockets and conveying equipment for a saw mill
- Heavy sprockets and drive systems for a logging de-barking plant for a Whangarei customer



### Heavy Engineering

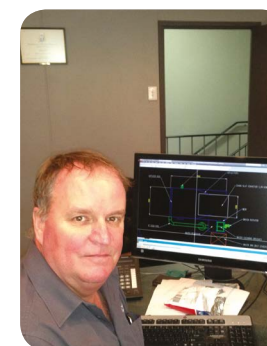
- Rebuild a yarding tower for a local logging contractor. (This was done in multiple shifts to reduce the customers down time)
- Design and build a log handling, de-barking and spray system for a Whangarei customer
- Supply and install structural steel for local school rebuild projects
- Profile cutting sprockets for industry logging equipment
- Design and built 13 conveyors for a local maize drying facility
- Design and built a maize dryer for a local maize drying customer
- Earthquake strengthening for many local buildings
- Built and installed a 60 metre high access tower for a Napier pulp mill.
- Design and built log haul trailers for a national stevedoring company





## Staff

At any given time Universal Engineering Limited employs around 40 staff skilled in all facets of engineering. At the helm is:



**Graham Mackey**

B.Sc., C.Eng., M.I.Mech.E.,  
M.I.PENZ., Dip.A.F,  
Engineering/Technical  
Director

Graham has worked in New Zealand and the United Kingdom and has over 30 years experience in the fabrication industry. He has been a client, a consultant, and worked in the manufacturing sector. This background gives him a good range of experience in theoretical and practical aspects of design and fabrication.



**Phil Matthews**

NZCE  
Operations/Sales  
Director

Phil started life as an apprentice fabricator before becoming a qualified tradesman. He later gained a New Zealand Certificate in Engineering. Phil has had 15 years in the engineering industry in Gisborne and Wellington and enjoys being the public face of the company and managing customer relations.

Universal Engineering's trades people, fabricators and supervisors have vast experience in different products and processes from small machine components to large multi-story buildings. We have a workplace that attracts, retains and motivates employees with a focus on health and safety in the workplace at all times.



# Plant

Universal invests in the latest 3D CAD technology. We have ProSteel, a 3D modeling software programme. This state-of-art software supports our construction and planning tasks particularly around complex structures. It produces shop drawings and assembles the connections. Innovation flows into our workshop with machinery such as laser measuring equipment and a CNC controlled high definition Plasma Profile Cutter. Plant equipment includes:

- |   |                     |
|---|---------------------|
| 11 overhead gantry.                               | 5 pedestal drills   |
| 1 x 5 tonne fork truck                            | 2 x 100 tonne press |
| 1 x 3 tonne fork truck                            | 1 lock former       |
| 1 x NC controlled 90 tonne press break.           | 4 lathes            |
| 1 x NC controlled 6mm guillotine                  | 1 CNC lathe         |
| 2 x European Carif cut off saw                    | 1 CNC mill          |
| 1 x 80 tonne Kingsland punch and shear            | 1 mill              |
| 1 x 12mm guillotine                               | 1 surface grinder   |
| 1 x 200 tonne press brake                         | 2 mill drills       |
| 1 x 320 tonne CNC press break                     | 1 shaper            |
| 1 x hypertherm high definition CNC profile cutter | 1 horizontal borer  |
| 1 heavy roller                                    | 15 mig welders      |
| 1 light roller                                    | 2 x ACDC welders    |



# Financial Performance

Universal Engineering operates within a tight financial framework overseen by a Financial Controller with over a decade of experience managing forecasts and cost controls.

# Our goals

- have the best and well trained employees
- have the best equipment and facilities
- produce the best product.

# Our Values

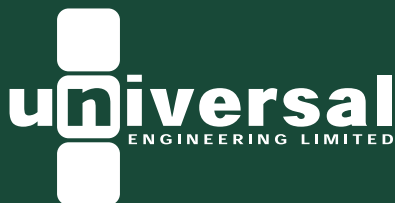
- Honesty and integrity in all we do.
- Deliver on our promises.
- Be professional in all we do.
- Stand by our products.

## References

Maurice Brown Genetic Technologies	(06) 869 0660
Garry Newton, Structural Engineering Consultant	(06) 842 0111
Mike Graham Cedenco Foods Gisborne	(06) 868 4199

## Financial References

Mike Torrie, McCullochs Chartered Accountants, Gisborne (06) 869 1400



Universal Engineering Limited

Phone (06) 869-0153

Fax (06) 868-8127

[phil@unieng.co.nz](mailto:phil@unieng.co.nz)

226 Stanley Road, Gisborne

PO Box 1357

[www.unieng.co.nz](http://www.unieng.co.nz)